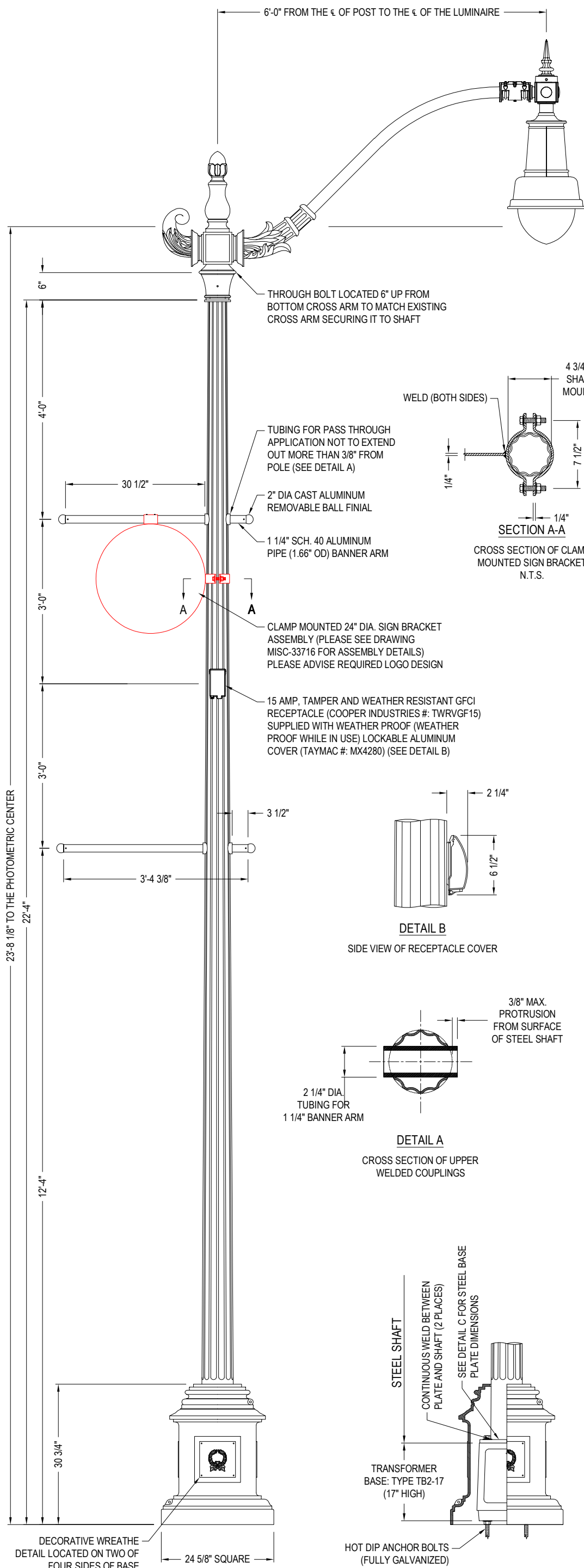


This drawing is property of Spring City Electrical Mfg. Co. and is issued to the recipient with the understanding that it shall not be copied, duplicated, passed on to unauthorized parties, nor used for any purpose other than that for which it is specifically furnished except with Spring City's written permission.



#### LUMINAIRE SPECIFICATIONS

STYLE: MANCHESTER LED LUMINAIRE WITH THE COLUMBIA LUMINAIRE ADAPTOR  
 HEIGHT: 28 7/8"  
 WIDTH: 17" DIAMETER  
 MATERIAL: CAST ALUMINUM ALLOY ANSI 356 PER A.S.T.M. B26-95  
 FINISH: POWDER COAT - RIVER TEXTURE GLOSS BLACK  
 GLOBE: 110 RIBBED GLASS  
 LAMPING: 120 WATT LED SYSTEM  
 VOLTAGE: ELECTRONICALLY WIRED AT 120-277 VOLTS  
 COLOR TEMP: 3000K (WARM WHITE)  
 OPTICS: TYPE III FROSTED MEDIUM (ASYMMETRIC DISTRIBUTION)  
 SURGE: 10K SURGE PROTECTION  
 MODIFIER: COLUMBIA LUMINAIRE ADAPTOR WITH EDGEWATER STYLE FINIAL

CATALOG NO.: ALMMNC-LE120-EVX-2G2-30-FM3-GR10-LACLB-FED-CU

#### CROSS ARM SPECIFICATIONS:

STYLE: NORTHAMPTON SINGLE ARM WITH QUAKERTOWN FITTER  
 WIDTH: 6'-0" FROM  $\epsilon$  OF POST TO  $\epsilon$  OF LUMINAIRE  
 HEIGHT: 3'-10 1/8"  
 MATERIAL: 2" SCH. 40 ALUMINUM PIPE WITH CAST ALUMINUM ORNAMENTATION  
 FINISH: POWDER COAT - RIVER TEXTURE GLOSS BLACK  
 TENON: 2 3/8" DIA. X 6 1/4" LONG (TO ACCEPT LUMINAIRE)

CATALOG NO.: AARNRT-M7-1S-72-42-TN2.38/6.25-CU

#### LAMP POST SPECIFICATIONS

STYLE: WILLARD  
 HEIGHT: 22'-4" OVERALL (20'-10" STEEL SHAFT)  
 PHOTOMETRIC CENTER: 23'-8 1/8"  
 BASE: 24 5/8" SQUARE  
 MATERIAL:  
 • SHAFT: 7 GAUGE, 12 FLAT FLUTE STEEL MONOTUBE CONSTRUCTION  
 • BASE: TWO PIECE, (WRAP) HEAVY WALL CAST ALUMINUM ALLOY A.N.S.I. 356, PER A.S.T.M. B26-95  
 FINISH: POWDER COAT - RIVER TEXTURE GLOSS BLACK  
 ACCESS DOOR: TWO DOORS LOCATED IN BASE TO COINCIDE WITH HAND HOLE IN STEEL SHAFT SECURED WITH STAINLESS STEEL SCREWS  
 GROUND PROVISION: GROUND PROVISIONS SUPPLIED WITH IN TRANSFORMER BASE (TRANSFORMER BASE SUPPLIED BY OTHERS)  
 ANCHOR BOLTS: STEEL BASE PLATE FOR STEEL SHAFT TO ACCEPT (4) 1" DIA. HEAVY HEX HEAD BOLTS (HARDWARE SUPPLIED BY OTHERS)  
 TENON: 3 1/2" DIA. X 7" HIGH TENON (TO MATCH EXISTING)  
 MODIFIER: TB2-17 STYLE TRANSFORMER BASE (SUPPLIED BY OTHERS)  
 OPTIONAL: (4) 1"-8NC x 3-3/4" HEX HEAD BOLT, FLAT WASHERS, HEAVY-DUTY FLAT WASHERS, AND HEX NUTS (ALL COMPONENTS GALVANIZED STEEL)

CATALOG NO.:  
 • BASE: AWBWL25-CU  
 • SHAFT: SSH6S-G17-07.00-20.83-TN3.50/7.00-(4)BP-GFWI-CU  
 BANNER ARMS:  
 • SINGLE: ABNUBT-1S-1.25-40.00-F02-CU  
 • MEDALLION: SUB-0002970-CU  
 HARDWARE: 140/2NW/GV



### Spring City Electrical Mfg. Co.

HALL AND MAIN STREETS - P.O. BOX 19 - SPRING CITY, PA. 19475  
 PHONE (610) 948-4000 - FAX (610) 948-5577 - WWW.SPRINGCITY.COM

DESCRIPTION	THE WILLARD WRAP BASE WITH A 20'-10" STEEL SHAFT, BANNER ARMS, THE NORTHAMPTON SINGLE CROSS ARM AND THE MANCHESTER LED LUMINAIRE WITH THE COLUMBIA LUMINAIRE ADAPTOR		
OPPORTUNITY	<b>LA CROSSE</b>		
SCALE	DRAWN BY:	DATE	DRAWING NO.
N.T.S.	B.K.R.	05-24-2022	SPEC-33709